

54/137

NOT PLATTED

137

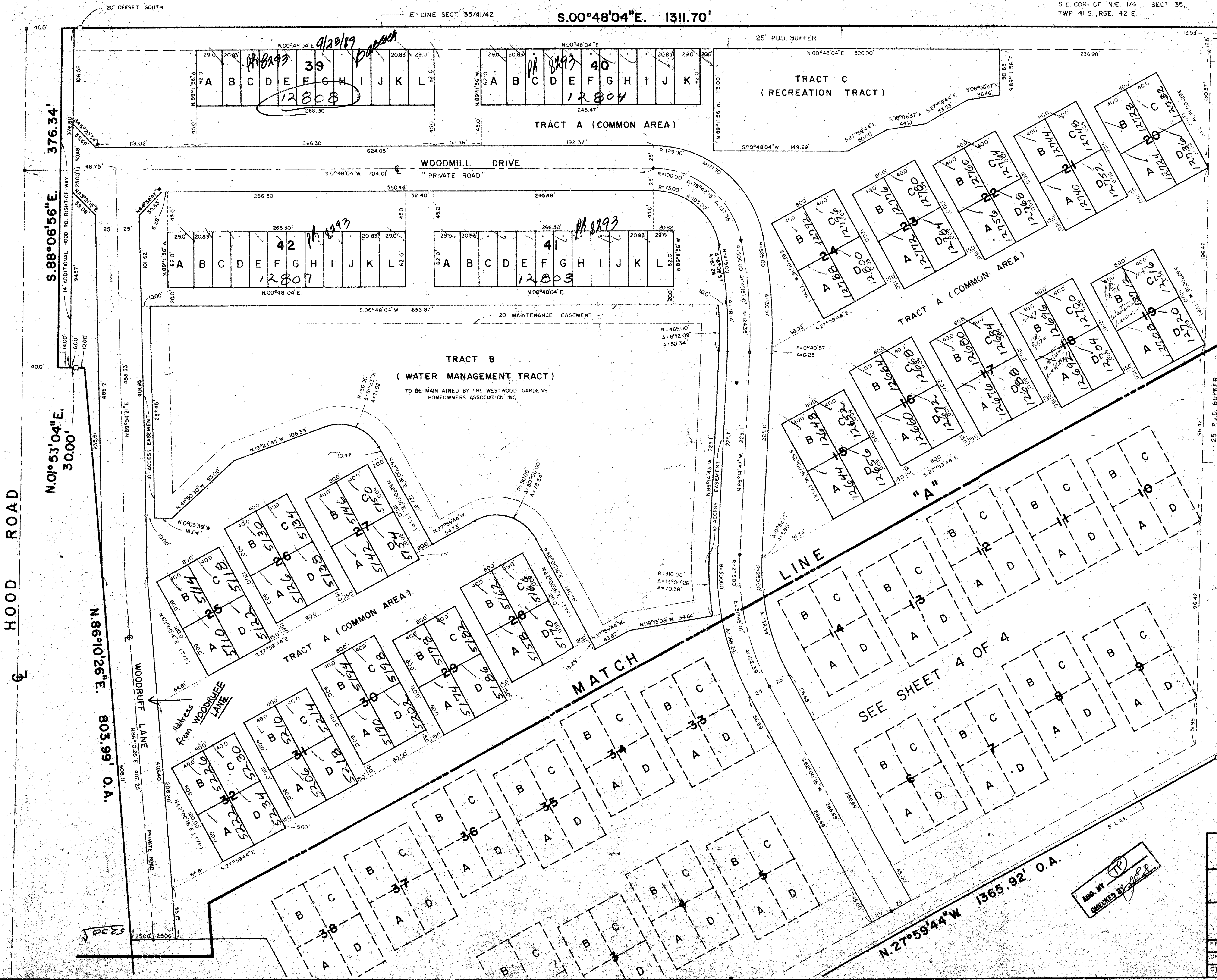
P.O.B.
S.E. COR. OF N.E. 1/4, SECT. 35,
TWP. 41 S., RGE. 42 E.

DRAWING NUMBER

DRAWING NUMBER

DRAWING NUMBER

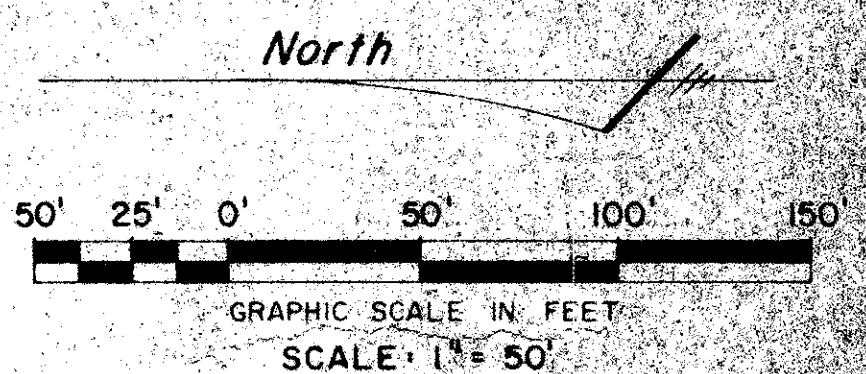
PLAN-HOLD CORPORATION - IRVINE, CALIFORNIA
REGISTERED NUMBER 1348
REGISTERED NUMBER 1348
REGISTERED NUMBER 1348



12500
25' PUD. BUFFER

25' PUD. BUFFER

25' PUD. BUFFER



Subdivision * Westwood Lakes
BOOK 54 PAGE 137
FLOOD ZONE B FLOOD MAP # 1200
GRID # 27 ZONING
ZIP CODE 92718
SHEET NAME Plot + Water

0379-004
54/137

PLAT OF WESTWOOD LAKES			
PLAT NO. 4 WESTWOOD GARDENS (A PUD)			
WILLIAM G. WALLACE, INC. CONSULTING ENGINEERS, LAND PLANNERS & SURVEYORS 100 ALTERNATE AVE., LAFAYETTE, CA 94501			
FIELD	R.I.	JOB NO. 85-644	SHEET 35 OF 36
OFFICE	R.R.	DATE: AUG. 86	DWG. NO. 85-644
CVD	DJM	REF	SHEET 35 OF 4

AND BY (TP)
CHECKED BY [Signature]